

PROJECT TITLE
**LINCOLN
EQUITIES -
NY-312 - ALT.
BLDG B**
NY-312 & PUGSLEY RD,
SOUTHEAST, NY 10509

ARCHITECT
ADBI / DESIGN SERVICES LLC
44 SOUTH BROADWAY, SUITE 1003
WHITE PLAINS, NY 10601

CIVIL ENGINEER
LANGAN ENGINEERING
300 KIMBALL DRIVE
PARSIPPANY, NJ 07054

STRUCTURAL ENGINEER
SMITH ROBERTS AND ASSOCIATES, INC.
6501 BLUFF RD.
INDIANAPOLIS, INDIANA 46217

MECHANICAL ENGINEER
NATIONAL DESIGN/ BUILD SERVICES
11840 BORMAN DRIVE
ST. LOUIS, MO 63146

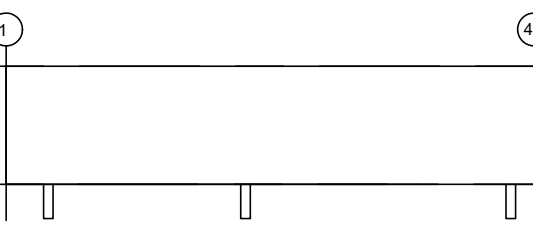
ELECTRICAL ENGINEER
FBX ENGINEERING
5 CHRISTY DRIVE, SUITE 307
CHADDS FORD, PA 19317

PLUMBING ENGINEER
MC CARTHY ENGINEERING ASSOCIATES,
INC.
315 EAST SECOND STREET
BOYERTOWN, PA 19512

FIRE PROTECTION ENGINEER
S A COMUNALE CO. INC.
2900 NEWPARK DRIVE
BARBERTON, OH 44203

SEAL

KEY PLAN

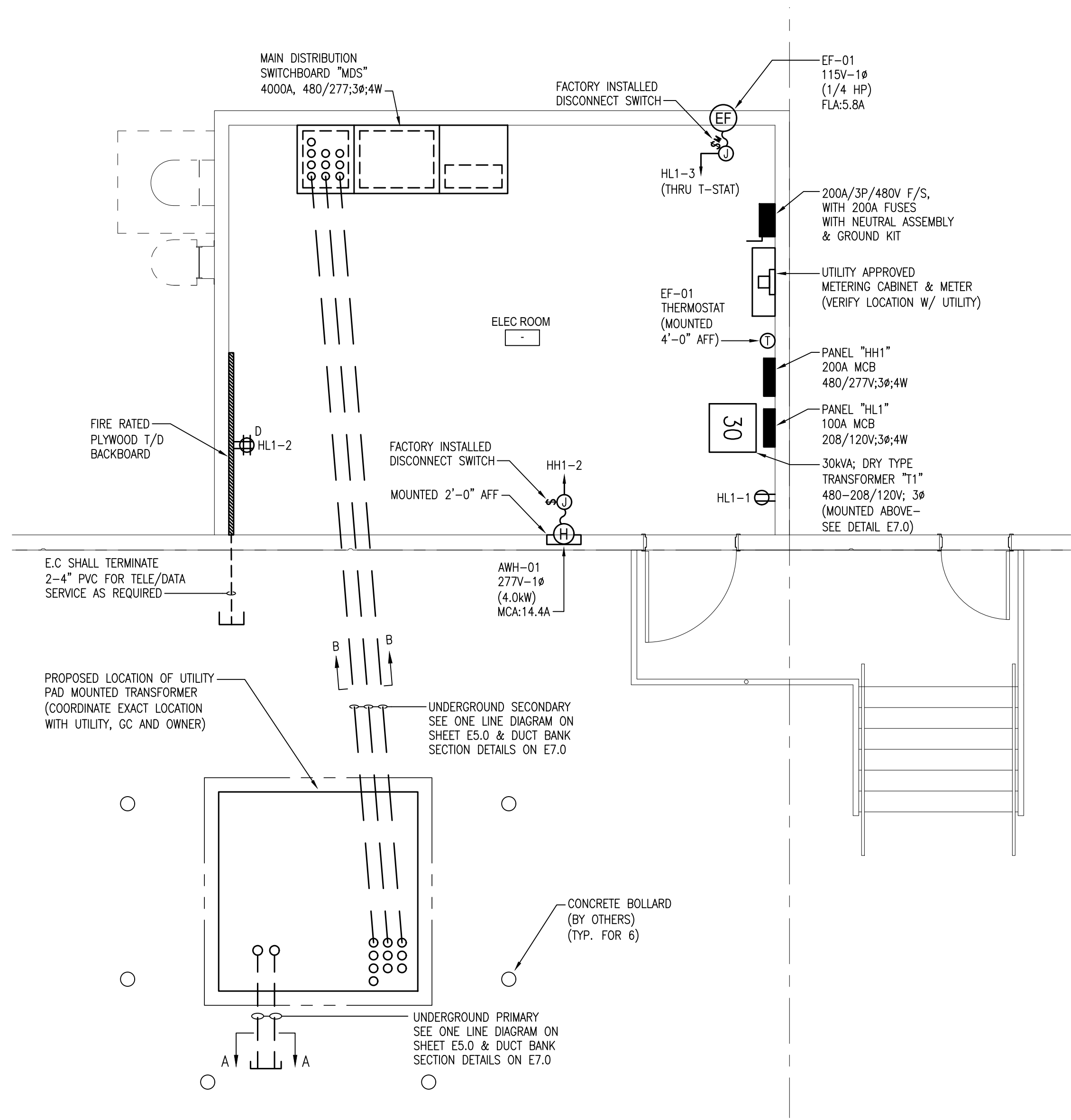
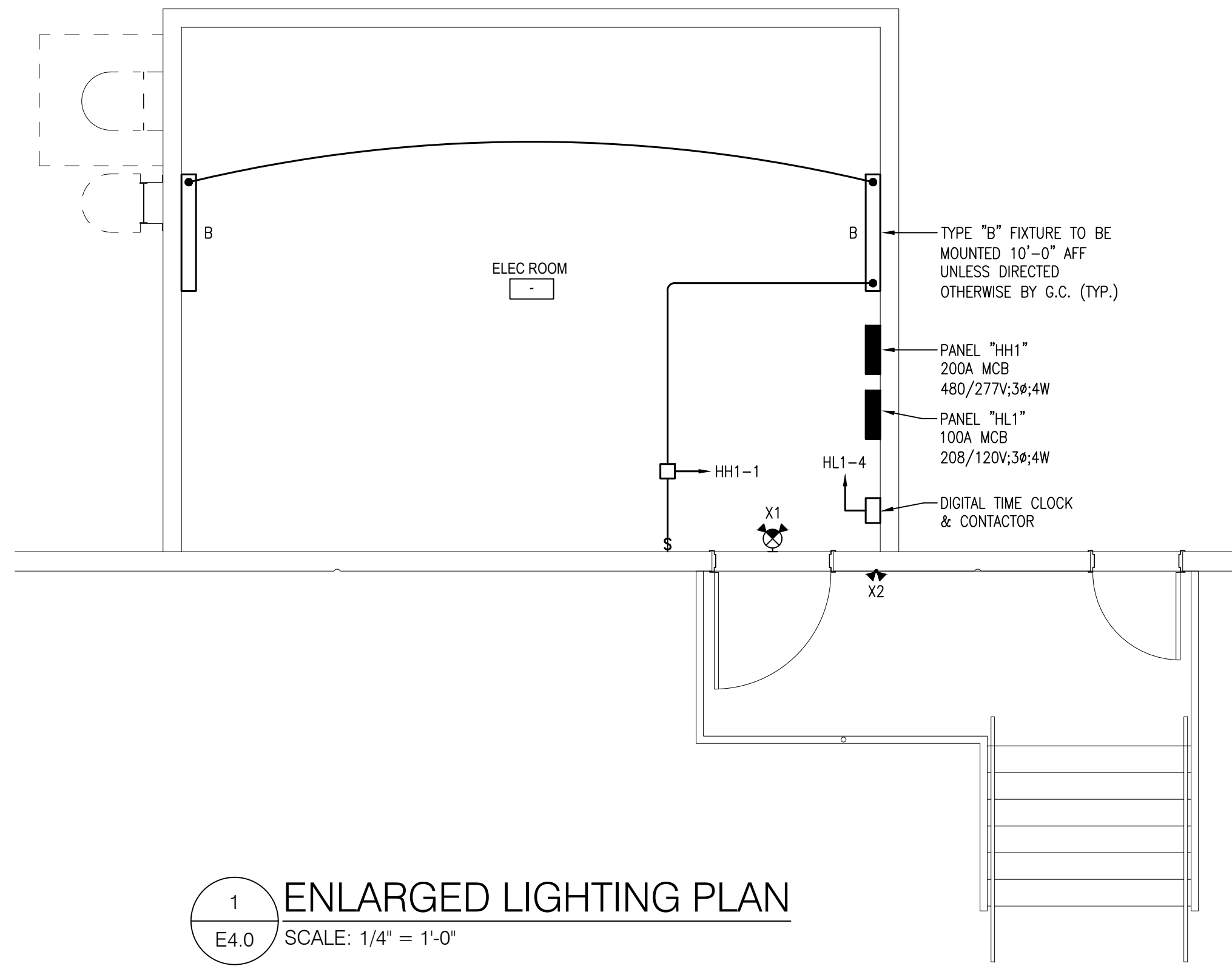


SUBMITTALS		
NO.	DATE	DESCRIPTION
A	05.27.22	ISSUE FOR REVIEW
0	06.10.22	ISSUE FOR PERMIT

PROJECT NO.
AS286-21/ NY131
DRAWN BY
FBX
SHEET TITLE
**ENLARGED LIGHTING
& POWER PLANS**

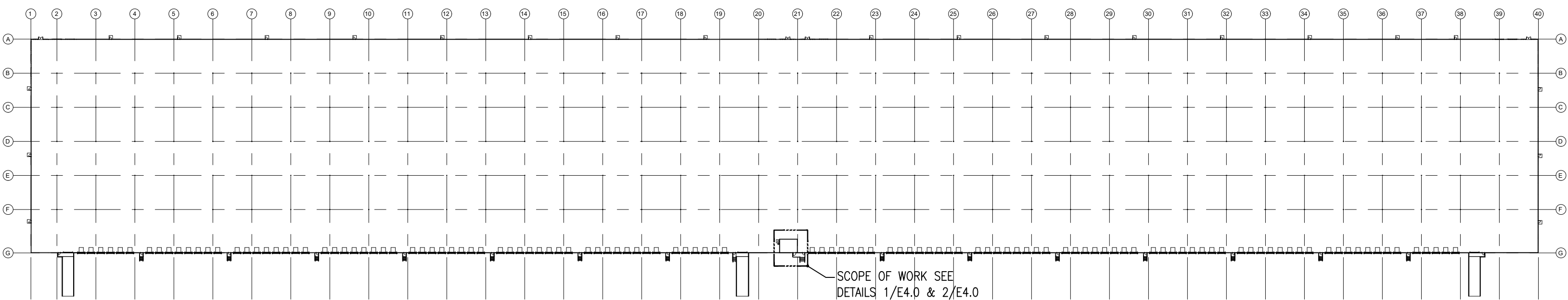
SHEET NO.

E4.0



2
E4.0 ENLARGED POWER PLAN
SCALE: 1/4" = 1'-0"

- NOTES:
1. ALL SHOWN IS NEW & BY EC UNLESS SPECIFICALLY NOTED OTHERWISE.
 2. E.C. SHALL VERIFY ALL MECHANICAL EQUIPMENT LOCATIONS AND ELECTRICAL REQUIREMENTS WITH MECHANICAL DRAWINGS PRIOR TO INSTALLATION.



KEYPLAN
SCALE: NONE